

Godfrey Hirst

F L O O R S

LAMINATE

Laminate Installation Instructions

Please read the following before starting installation

- Start with a visual inspection of all boards before installation. Once installed, the products are considered accepted of grade and standard.
- Never install defective product. Product should always be inspected prior to installation and any visual defects in the product should not be installed. If the entire product has visual defects, contact the dealer.
- It is normally deemed best practice for the product to be installed after all other construction work has finished.

Please read the following instructions before laying the floor:

- Godfrey Hirst Laminate is manufactured to be installed floating without glue. The 5G InstaClic™ system allows the boards to be joined together without the use of glue.
- Packs of boards must be stored in a cool, shaded and protected dry place (ambient temperature of 18 – 25°C and relative humidity of 30-70%).
Do not open the packs until the day of installation to avoid moisture pickup.
- **Each board should be carefully checked prior to installation.** Never install any damaged boards. Inspect each board as you install them.
- Mix and match between packs to get better colour matching on your floor. Always work out of several different packs alternately for installation.
- **The surface-temperature of the sub-floor, at the time of installation, should be at least 15°C but never exceed 27°C, with the relative humidity not exceeding 70%.**
- The subfloor should be dry, clean, level and free of any cracks.
- Irregularities on the subfloor should not exceed 3 mm every 1 meter in all directions.
- If there is need to level concrete subfloor, a cement-based floor-filler, or an appropriate grinding machine should be used.
- The installation of a 2mm moisture barrier, such as Godfrey Hirst Arriba™ or Arriba Plus™ Underlay (or equivalent) is recommended. Never overlap edges of the underlay. Tape underlay edges with appropriate adhesive tape.



Fig 1. Ensure that the subfloor is clean and level. Using a 1m straightedge, the subfloor level should not exceed 3mm over 1 lineal metre in any direction. Uneven subfloors will effect the performance of the product and may lead to product failure and can cause noise. Floors can be levelled with a self leveling compound and high spots can be grounded/sanded. The product can be installed over well adhered and level vinyl, cork, ceramic tiles and timber floorcoverings (never over other floating floorcoverings) The product cannot be installed over carpet and or carpet underlay.



Fig 3. The product is recommend to be installed as a floating floor. It is not recommend to nail, screw or adhere product to the sub floor with adhesive.

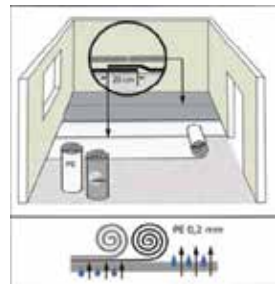


Fig 5. Never overlap underlay edges. Joins should be taped with an adhesive tape. When planning the installation remember to not place a joint in the product within 20 cm of a join in the underlay.

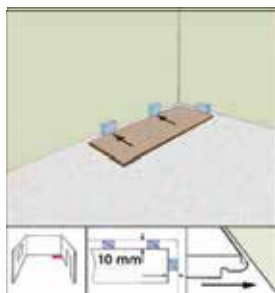


Fig 7. Starting from right to left place the first board in position, using spacers 10mm from wall.

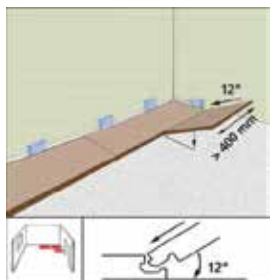


Fig 9. Start the next row with a board cut no smaller than 400mm. Click the side profile into the first row.

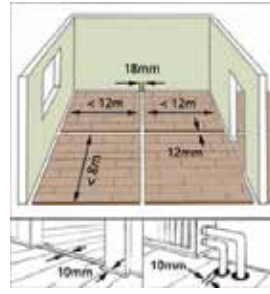


Fig 2. Floating floors will expand and contract as a whole. It is recommended that areas over 12m in length and 8m in width be compartmentalised. This can be achieved by the use of expansion trims. This must be discussed with the dealer and installer before installation commences. An expansion gap of no less than 10mm must be left around the perimeter and fixed objects.

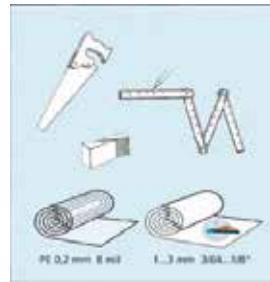


Fig 4. Required for installation

- pencil
- saw
- spacers
- measuring tape
- 2mm closed cell moisture barrier underlay

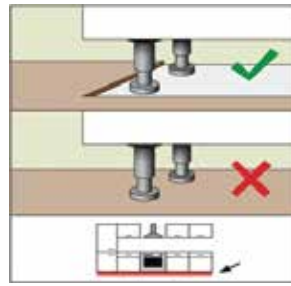


Fig 6. Never place kitchens or other fixed items on the product as this may cause product failure. The illustration shows the correct procedure to install such objects.

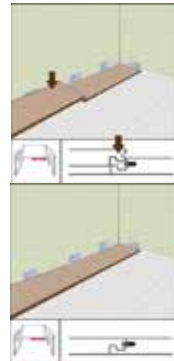


Fig 8. Place the second board into the first board and firmly press the end lock till you hear a click.

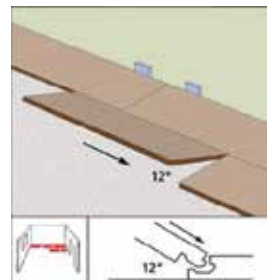


Fig 10. Place the second board of row two into the side profile of the first row. Slide to the end lock

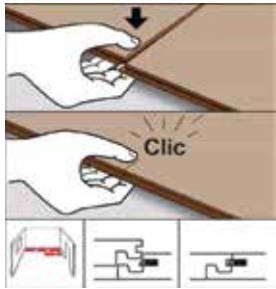


Fig 11.
Place one hand under the boards and a thumb on top, pressing until you hear a click.

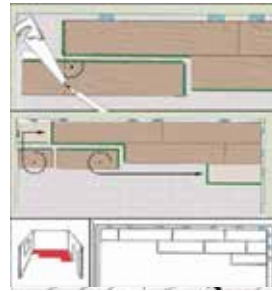


Fig 12.
Cut a board to fill in row one as illustrated and place the other end of that board to start row 3 making sure that it still has its locking system.

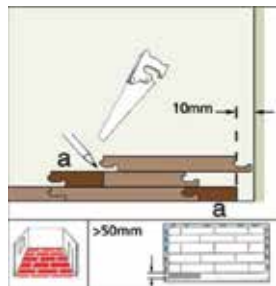


Fig 13.
To cut in the last row, place board **a** in diagram onto the last row of installed boards. Then place another board over the top of board **a**. Position this board, taking into consideration the locking system and expansion gap, and mark board **a** as illustrated. Then cut board **a** to fit last row. Board **a** must not be smaller than 50mm.

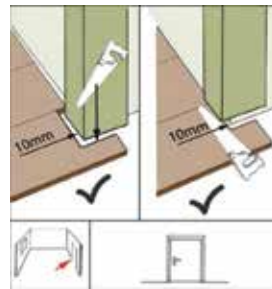


Fig 14.
Architraves (doorways) can be installed with a 10mm expansion gap. Or the architrave can be undercut a little higher than the thickness of the board. Adequate expansion must still be left as illustrated.

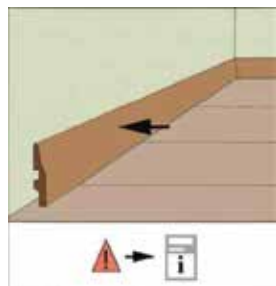


Fig 15.
Skirting/ scotia or quad can be installed around walls. This must not be fixed with nails or screws to the boards and only fixed to the wall. Carefully install skirting/scotia or quad so that it is not pushing down on the boards. This will affect the floors ability to expand and contract and may lead to product failure.

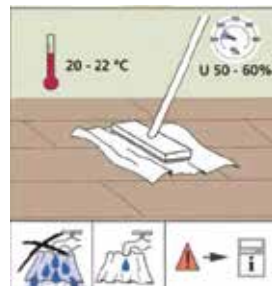


Fig 16.
Never clean with a excessively wet mop. Clean with a damp well wrung out mop. The use of steam mops are not recommended and may cause product failure.

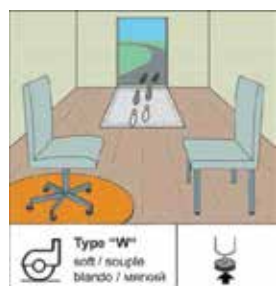


Fig 17.
Always place walk off mats in doorways and protect the boards by fitting rubber or felt protectors on furniture. Roller castor chairs should be on a protective mat.

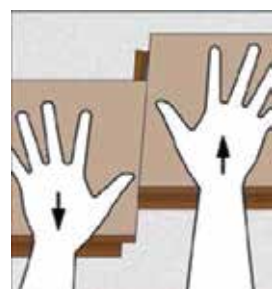


Fig 18.
Remove the boards by unclipping the side profile. Then simply slide the end profile backwards .