



13 \_\_\_\_\_  
**Kosi Cross**



16 \_\_\_\_\_  
**Diamantina**



22 \_\_\_\_\_  
**Persian Red**



33 \_\_\_\_\_  
**Persian Blue**



34 \_\_\_\_\_  
**Tartan Bells**



73 \_\_\_\_\_  
**Persian Blonde**



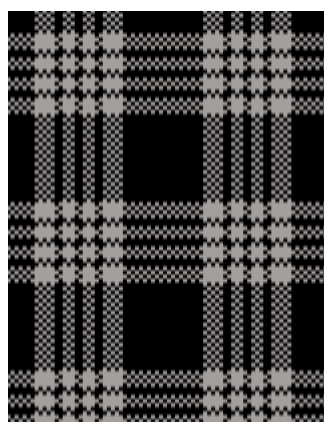
90 \_\_\_\_\_  
**Tartan Quartz**



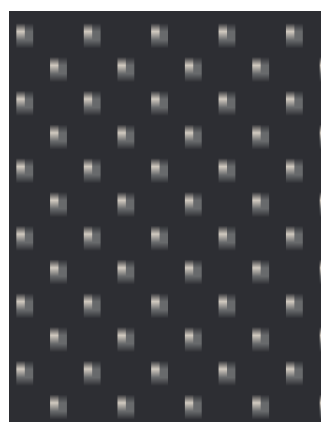
92 \_\_\_\_\_  
**Hotham Cross**



93 \_\_\_\_\_  
**Rivet**



95 \_\_\_\_\_  
**Tartan Rock**



97 \_\_\_\_\_  
**Atom**



98 \_\_\_\_\_  
**Dark Net**

## TECHNICAL SPECIFICATIONS

<b>Description</b>	Woven Carpet	<b>Beat Up</b>	27.56/10cm (7/inch)
<b>Colours</b>	12 Standard	<b>Pile Height</b>	6.0mm (+/- 1mm)
<b>Yarn</b>	80% Wool / 20% Synthetic	<b>Pile Weight</b>	1152g/m <sup>2</sup> (34oz/y <sup>2</sup> ) (+/- 5%)
<b>Pitch</b>	27.56/10cm (7/inch)	<b>Width</b>	3.66 metres

## PERFORMANCE

<b>Flammability</b>	CRF 6.5 kW/m <sup>2</sup> (Conventionally laid) Smoke Value 89% minutes	ISO9239
<b>ACCS Rating</b>	Residential Extra Heavy Duty & Stairs - 6 Star Contract Heavy Duty & Stairs - 3 Star #20036	

## PATTERN MATCH

Design Name	Repeat (width x length)	Match
13 Kosi Cross	10.16cm (W) x 10.16cm (L)	Self Match
16 Diamantina	15.24cm (W) x 15.24cm (L)	Self Match
22 Persian Red	91.44cm (W) x 104.52cm (L)	Self Match
33 Persian Blue	91.44cm (W) x 104.52cm (L)	Self Match
34 Tartan Bells	15.24cm (W) x 15.24cm (L)	Self Match
73 Persian Blonde	91.44cm (W) x 104.52cm (L)	Self Match
90 Tartan Quartz	15.24cm (W) x 15.24cm (L)	Self Match
92 Hotham Cross	10.16cm (W) x 10.16cm (L)	Self Match
93 Rivet	2.9cm (W) x 2.9cm (L)	Self Match
95 Tartan Rock	15.24cm (W) x 15.24cm (L)	Self Match
97 Atom	2.9cm (W) x 2.9cm (L)	Self Match
98 Dark Net	10.16cm (W) x 10.16cm (L)	Self Match

## SUSTAINABILITY

<b>PVC Minimisation</b>	100% PVC free
<b>Indoor Air Quality<sup>#</sup></b>	Green Building Council Compliant for VOC Emission Rate Limits
<b>Product Stewardship</b>	This product is Recyclable and Qualifies for Takeback at the End of Life under the Godfrey Hirst Product Stewardship Program
<b>Green Star</b>	Environmental Certification Scheme (ECS) Level 4 Maximum points - Certification #20036

Test results and certificates are available on request. Specifications and colourations are subject to manufacturing tolerances. As part of Fellex's continuous improvement process, Fellex reserves the right to change the specifications of or delete colours of this product without notice. All Fellex Woven carpets must be installed in accordance with relevant Australian Standards and in conjunction with the Fellex Carpets Installation Instructions (as set out in the Fellex Carpet Collection Guide (Australian Edition) unless otherwise specified.

\*This product comes with a manufacturer's warranty for new carpet installed indoors in owner occupied premises, if properly installed and maintained. This Warranty is in addition to consumers' rights under the statutory consumer guarantee provisions in the Australian Consumer Law, which may exceed the rights under this Warranty. The amount recoverable under the warranty decreases after five years. For full information in respect to the scope and limitations of this warranty, please refer to the full terms and conditions available from your retailer, by calling 1300 130 239, or by downloading from [www.fellex.com](http://www.fellex.com). \*Terms and conditions apply to all commercial warranties - contact your Fellex Account Manager or our Head Office.

While all care is taken, product images may vary in colour due to possible printing process variations. Images do not seek to duplicate the exact visual appearance, but serve merely as a guide or point of reference.